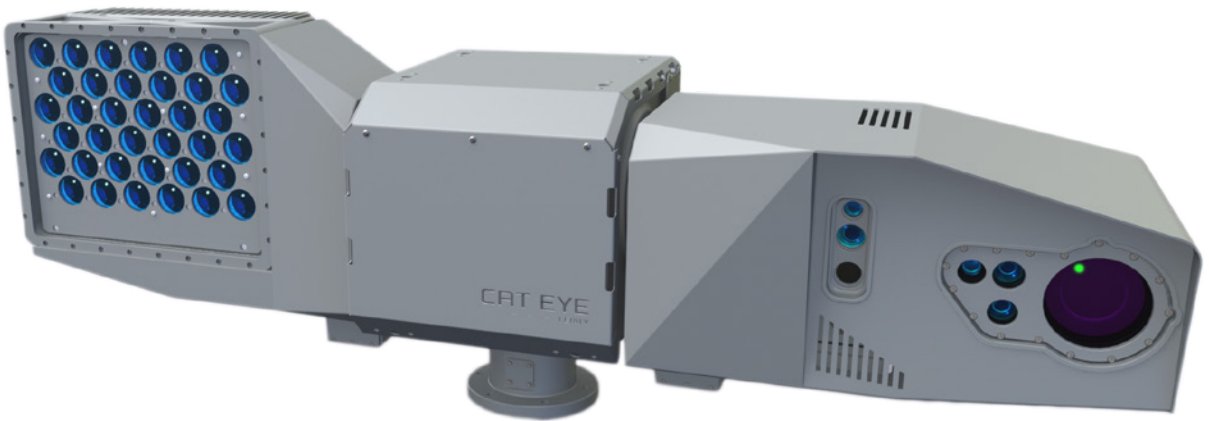

LERITY

ALCEN

CAT EYE SYSTEM XLR

Active* & Panoramic Extra-Long-Range Surveillance System



APPLICATIONS

Observation

- 24/7 surveillance
- Adjustable surveillance area
- Panoramic surveillance
- Horizon scanning

Security

- Target acquisition and tracking
- Automatic event detection
- Multi-threat detection

INNOVATIONS & FEATURES

- Extra-Long-Range identification
- Ultra-low-light sensor
- 200 W light illuminator
- Embedded Active Imaging
- Class 1 Laser Range Finder
- Gyrostabilized Pan & Tilt
- Ruggedized according to MIL-STD
- Modular architecture

*In cases of poor visibility, pulsed laser illuminator synchronized with camera exposure

Ultra-High performance for
Extra Long Range in any condition

cameras & vision systems

VISIBLE / NEAR IR Narrow Field of View CHANNEL

	Field of View	Sensitivity	Input Light Range	Resolution
NFOV SENSITIVITY RESOLUTION	2.3°(H) × 1.3°(V)	Up to night level 3 in passive mode	0.01 to 100,000 Lux	2 MP Full HD
	Ifov	VIS/NIR/BP	Focus	Sensor
	20 µrad	3-band selection	Manual/Automatic	sCMOS Monochrome

ILLUMINATOR**

	Wave Length	Illuminated field	Optical Power Max	DNDO
SOURCE EYE SAFETY MODE	808 nm	1.1°(H) × 1.1°(V)	200 W	300 m
	Mode 1	Mode 2	Mode 3	Eye Safety
	Automatic power control	Power guided by line of sight	Pulsed for range gating	Automatic shutdown

VISIBLE Wide Field of View CHANNEL

	Field of View	Sensitivity	Input Light Range	Resolution
WFOV SENSITIVITY RESOLUTION	16.5°(H) × 9.3°(V)	Up to night level 2	0.1 to 100,000 Lux	3.2 MP

LRF

	Wave Length	Detection Range	Safety	Divergence
DISTANCE MEASURE	1,556 nm	14.5 km (2.3 m × 2.3 m)	Class 1	0.35 mrad

PAN & TILT Unit

	Pan Range & Speed	Tilt Range & Speed	Accuracy	Stabilization
RANGE – SPEED ACCURACY	N × 360° 0.001°/s to 100°/s	± 90° 0.001°/s to 80°/s	0.02°	± 300 µrad

COMMAND & CONTROL

	Real-time Observation – Full HD Restitution Format	Digital Map
MAIN FEATURES	PTZ/Focus, Single picture, picture in picture, panoramic picture, sector scanning with presets	Multilayer support: map, target, exclusion and alarm zones, drawing and measurement tools Multi sensor support: radar, AIS, GPS
	Video Analysis and Recording	Video Surveillance Integration
	Automatic detection & video tracking, Video and snapshot recording: H264/MPEG/JPEG	Slew-to-cue mode Target tracking

INTERFACE / POWER / COMMUNICATION / MAINTENANCE

	Weight	Dimensions	Voltage	Power
WEIGHT DIMENSION INTERFACE COMMUNICATION	< 75 kg	1,240 × 370 × 450 mm ³	24 to 48 VDC	900 W
	Communication	Protocol	Workstation	Maintenance
	Eth 10/100 Base-T RS-232, RS-485/422, NMEA Input	DGP-PT Protocol	Desktop PC 21" display Joystick	Comprehensive Built-in Test

ENVIRONMENTAL

	Temperature	IP	Shocks & Vibration	EMI/EMC
TEMPERATURE SHOCKS VIBRATION	[-30°C – +55°C] functional 1,100 W/m ² Solar Radiation	IP67	MIL-STD 810 F	MIL-STD 461-F

** Information on effective ranges for day/night available under NDA. Please contact us.

ALCEN

6 rue Paul Baudry
75008 Paris – France
Tel. + 33 (0)1 40 72 55 00
alcen@alcen.com
www.alcen.com



LERITY

Parc Saint-Christophe – 10 av. de l'entreprise
95862 Cergy-Pontoise – France
Tel. +33 (0)1 34 24 38 20
info@lerity-alcen.com
www.lerity-alcen.com